

HELP BOOST STUDENT PARTICIPATION WITH



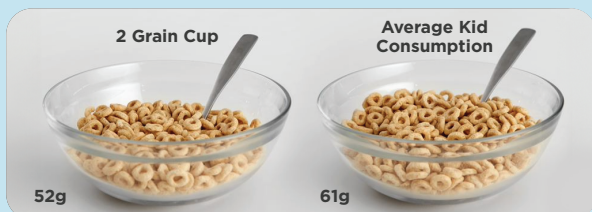
K-12 REGULATION READY

2 GRAIN CEREAL CUPS



KIDS WANT MORE

At 56g per cup, our 2 grain cereal cups are in-line with portions kids enjoy at home.¹



Kids ages 6-17 consume an average of 52-61 grams of cold cereal per eating occasion at home.¹

REGULATION-READY

All 2 grain cereal cups meet SY25-26 standards & helps meet SY27-28 weekly added sugar limits.

Perfectly pairs with unflavored milk to help reduce added sugars on your menu.

Compare added sugars in cup cereal vs. two 1 grain items on your breakfast menu - see the difference yourself!

PARTICIPATION DRIVING BRANDS

Boost student participation with familiar, retail-style packaging.

All cereal cups are CACFP-eligible including 4 delicious gluten-free options.

SHORT BREAKFAST WINDOW?

Our 2 grain cereal cups are perfect beyond the cafeteria - great for breakfast in the classroom or grab & go!



SPOONFULS OF SUCCESS

CUP CEREAL STORIES FROM OPERATORS LIKE YOU

"OUR CEREAL SALES WENT THROUGH THE ROOF!"

"We saw a 10 percent uptick in milk sales each week, beginning with National School Breakfast Week, and it continued through the end of the school year."

- KAREN HALLFORD, GWINNETT COUNTY PUBLIC SCHOOLS NUTRITION DIRECTOR



"BRANDS MAKE IT EASY!"

"The variety and brand recognition of General Mills 2 grain cup cereals have helped our program grow. We appreciate how easy they make keeping up with the regulations and sugar requirements, and my staff and students both prefer 2 grain cups because they only have to grab the one product to get their grain servings."

-EMILY HANLIN, EXECUTIVE DIRECTOR, FOOD AND NUTRITION SERVICES AT COBB COUNTY SCHOOL DISTRICT

"KIDS LOVE THEM & OUR PARTICIPATION IS HIGHER!!"

"We use the 2 grain cereal cups in our Elementary, Middle and High Schools breakfast menus. Before, we were using the 1 oz cereal bowls and adding an extra item. 2 oz cups are more convenient because they meet the 2 oz grain and less labor is required."

- SOUTHSIDE ISD, CHILD NUTRITION SPECIALIST SAN ANTONIO, TX

UPC	PRODUCT DESCRIPTION	DISTRIBUTOR CODE	MEAL PATTERN EQUIVALENCY	ADDED SUGARS (G)
100-16000-22489-3	25% Less Sugar* Lucky Charms™		2 Grain	12
100-16000-14886-1	25% Less Sugar* Cinnamon Toast Crunch™		2 Grain	11
100-16000-14885-4	25% Less Sugar* Cocoa Puffs™		2 Grain	12
100-16000-19567-4	25% Less Sugar* Trix™		2 Grain	12
100-16000-17262-0	Blueberry Chex™		2 Grain	11
100-16000-14883-0	Cinnamon Chex™		2 Grain	12
100-16000-18448-7	Honey Cheerios™		2 Grain	12

*Circana, National Eating Trends®; Sourced from Home/Retail. Period 2YE Feb'25.

Cheerios

Cinnamon
Toast
Crunch

Lucky
Charms

Chex
mix

Cocoa
Puffs

Trix

 General Mills
FOODSERVICE

generalmillsfoodservice.com
1-800-243-5687